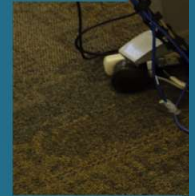
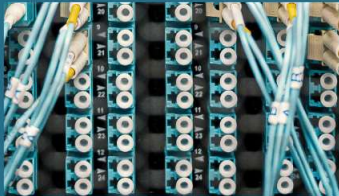


APA-ISS SPRING CONFERENCE

FRIDAY, APRIL 16, 2021 AND FRIDAY, APRIL 23, 2021



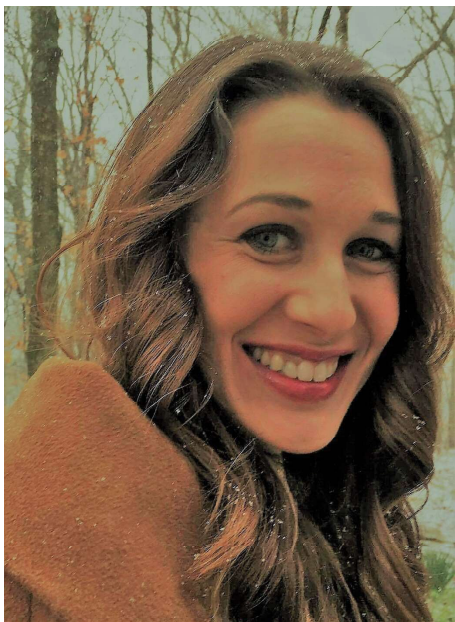
Planning Tools for Affordable Housing

APRIL 16, 2021

10:30 AM - 11:45 AM

(CM | 1.25)

Learn how to create a basic affordable housing inventory with publicly available data and incorporate the results into local planning activities. Then, dive deeper and learn about the various planning tools that IHDA uses to conduct housing stock surveys, engage residents, and create documentation that connects communities to affordable housing resources and investments, and hear from municipalities who have successfully utilized Community Revitalization as a component of funding applications.



As a Community Planner with the McLean County Regional Planning Commission, **Lauren Gibson, AICP**, leads the Regional Housing Initiatives, an interjurisdictional advisory effort to proactively address housing issues in the community. In this role, Lauren carries out community-centered planning efforts, such as the APA-IL award-winning Bloomington and Normal Consolidated Plans, that use a mix of quantitative and qualitative data to drive innovative and sustainable solutions to housing issues in Bloomington-Normal and beyond. Lauren is passionate about exploring the intersection between data analysis and lived experience, as well as making sure everyone has a seat at the table when it comes to planning the future of their community.

Lauren previously worked in planning and economic development as a graduate fellow for the State of Illinois, and then on the local level for the City of Springfield. She holds a BA in History and Philosophy of Religion from Southern Illinois University Edwardsville and Masters in Public Administration from University of Illinois at Springfield.

Destini Lednický is the Housing Director for the Southwestern Illinois Development Authority. This position was created in 2016 in order to perform an instrumental role in increasing quality, affordable housing options and to improve neighborhoods within their four-county jurisdiction including Bond, Clinton, Madison and St. Clair. Destini carries out this objective by working with partners to identify, plan and implement affordable housing developments based on market needs, locations considered high opportunity, or which contribute to community revitalization and financial viability. Previously, she worked for the Madison County Community Development Department with federal and state funded grant programs. Additionally, she worked for a not-for-profit organization securing funding and managing an acquisition, repair and resale program using donated single-family homes as well as overseeing foreclosure intervention and housing counseling services. Destini has a BS in Social Work from Southern Illinois University Edwardsville.



Emily Mueller is an Assistant Director of the Strategic Planning and Reporting Department at the Illinois Housing Development Authority (IHDA). In this role, Emily designs and carries out data-driven, community-led planning efforts across the state, which include the Illinois Housing Blueprint and the Community Revitalization Program - the nation's first planning program offered by a Housing Finance Agency. Through this program, Emily oversees a team and portfolio of projects that provide free planning services and technical assistance to communities throughout Illinois. This planning helps to connect communities to housing resources and funding that catalyze economic development, mitigate neighborhood instabilities, and create and preserve affordable housing. Emily is passionate about developing creative strategies to promote sustainable and thriving places.

Prior to joining IHDA in 2016, Emily worked in community arts development, refugee resettlement, and rural economic development. She holds a Master of Public Policy from the University of Minnesota, and a Bachelor of Arts in Anthropology from Loyola University Chicago.