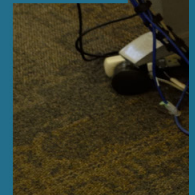
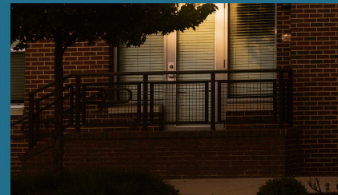
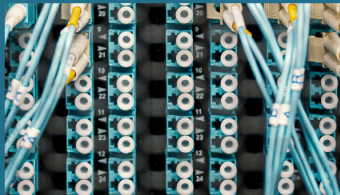


# APA-ISS SPRING CONFERENCE

FRIDAY, APRIL 16, 2021 AND FRIDAY, APRIL 23, 2021



## Bristol Place Virtual Mobile Workshop

APRIL 16, 2021  
(CM | 1.25)

Bristol Place Residences is a new affordable housing neighborhood in Champaign built with the Low Income Housing Tax Credit (LIHTC) program. The City engaged residents in an neighborhood planning effort along with creating a vision and master plan for the new neighborhood. Following acquisition, demolition and an extensive relocation program, construction began by AHDVS, LLC in 2018. The neighborhood consists of 90 affordable housing units built within a traditional neighborhood design with walkable, connected streets, alleys and a large park amenity that also serves as flood control for the Boneyard Creek. In this Virtual Mobile Workshop, you will learn about the planning that went into the project, see the new neighborhood close-up and hear from the key players from the City, and the developer, in executing the plan. If your community is looking to connect affordable housing efforts with strong neighborhood planning, this session will provide many great examples on how to do that.

**Ms. Jean Algee** recently retired from the City of Champaign where she served for years as a Community Development Specialist in the Neighborhood Services Department. While at the City, Jean's work focused primarily on the relocation efforts for Bristol Place residents including managing the HUD Section 108 loan. Jean worked closely with residents to assess their needs and to find appropriate resources. She worked closely with the Housing Authority of Champaign County to assist in relocation efforts as well.



**Mr. Rob Kowalski, FAICP** aids in overseeing the Planning and Development Department. This includes leading the City's long-range planning efforts as well as managing key land use and economic development projects that advance the goals of the City's Comprehensive Plan. Rob holds a Master of Urban Planning from the University of Illinois at Urbana-Champaign and a Bachelor of Science in Geography from Illinois State University.

He is a member of the American Planning Association and has been inducted in the College of Fellows of the American Institute of Certified Planners. He also holds an adjunct teaching position in the Department of Urban and Regional Planning at the University of Illinois at Urbana-Champaign.

**Mr. Jim Roberts** is an experienced developer of affordable housing rental communities for families, seniors, veterans and persons of disability. Jim is experienced in developing sustainable affordable housing communities in collaboration with nonprofits, public housing authorities and private developers. Jim is skilled at executing multi-layered financing programs including Low Income Housing Tax Credits, among others.

Jim possesses over 20 years of experience and has participated in the development of approximately 1,600 units. Mr. Roberts is experienced at creating jobs through construction and management consistent with Section 3 and MBE and WBE requirements. Jim holds a Bachelor of Arts and Architecture Degrees from Rice University and a MBA Degree from the University of Chicago.



**Ms. Kerri Wiman** is the Neighborhood Services Director for the City of Champaign. She manages and coordinates all activities and staff of the Neighborhood Services Department, including a variety of community development and housing programs, property maintenance and fire prevention code enforcement, and neighborhood organizing and citizen outreach activities. Ms. Wiman also provides leadership for interdepartmental efforts to deliver neighborhood-based services.

Ms. Wiman has more than 27 years of community development experience through her work in municipal government and the banking industry. Her career profile includes mortgage lending, community reinvestment, and grant compliance. Prior to her employment with the City of Champaign, Ms. Wiman worked for the Village of Rantoul and the City of Urbana and covered the central/northern regions of Illinois for a national bank.